



MISSOURI RECYCLING ASSOCIATION

2019 Annual Conference

St. Louis

MORA

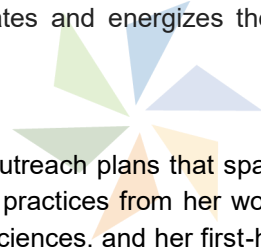




JOE ABERNATHY
ST. LOUIS CARDINALS
VICE PRESIDENT, FACILITIES
PLANNING AND ENGINEERING

KEY NOTE SPEAKER

Abernathy is responsible for all day-to-day facility operations and game-day event management activities at Busch Stadium. He is also responsible for managing the collective bargaining agreements with the labor unions employed by the Cardinals, and manages capital improvement projects at Busch Stadium. He serves on the board of directors of the Green Sports Alliance as well as the stadium operations advisory committee for Major League Baseball. In his role as co-chairman of the sustainable operations subcommittee, Abernathy is spearheading the benchmarking of sustainable operations metrics for all MLB facilities. His leadership has grown the Cardinals initiative *4 a Greener Game* from its two-month pilot during the 2008 season into the powerhouse program that annually adds highly visible new features – like 2019’s LED display lighting – while achieving ongoing waste diversion, food distribution and energy conservation that educates, motivates and energizes the world’s greatest fans.



BROOKE TULLY
BROOKETULLY.COM
BROOKE@BROOKETULLY.COM

WORKSHOP: CHANGING BEHAVIORS

Brooke Tully helps organizations design communication & outreach plans that spark conservation movements. She does this by bringing together best practices from her work in commercial advertising, insights from the behavioral and social sciences, and her first-hand experience implementing conservation programs. Brooke spent the first decade of her career working in ad agencies, such as Ogilvy, helping clients reach target audiences to build brand awareness, change preferences, and sell products. In 2007, she joined the NGO Rare where she designed and implemented behavior change campaigns that inspired local communities in Mongolia, Thailand, Laos, and The Philippines to adopt more sustainable fishing and hunting behaviors. Operating independently since 2016, Brooke offers workshops, online courses, and consulting services that provide practical steps for creating communication & outreach plans that motivate people to take action and change behaviors.



This conference and program is partially funded through sponsorship grants through the Missouri Department of Natural Resources and the Solid Waste Management Districts.



MORA ANNUAL AWARDS RECEPTION

TUESDAY, 5:30 - 6:30 P.M.

2019 AWARD WINNERS

7R's OF EXCELLENCE

- Boonslick Industries
- Branson-Hollister Lions Club
- EcoShred
- Mary Ann Phillips
- Missouri State Highway Patrol
- Perennial
- St. Louis Cardinals
- St. Louis Composting
- Call2Recycle

President’s Award—Tim Warren

LUNCH BUFFET
(FOLLOWING TOURS)

SCHLAFLY TAP ROOM BREWPUB
2100 LOCUST

TOURS

TUESDAY, 9:45 - 11:30 A.M.

REPUBLIC SERVICES MRF

See what is produced as the facility transforms single stream materials into salable commodities.

ST. LOUIS COMPOSTING

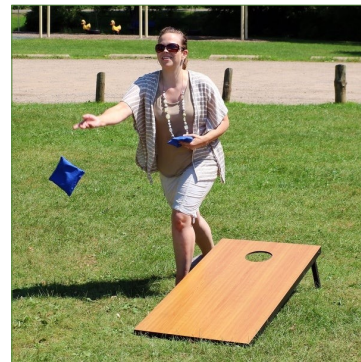
See firsthand how yard waste, brush, food waste, and pallets are processed.

EPC - ELECTRONIC RECYCLING

Find out how a single piece of electrical equipment goes through the system from beginning to end using the shredder/sorter system.

STRATEGIC MATERIALS - GLASS RECYCLING

This walking tour of the plant explains how the glass recycling system operates.



CORNHOLE TOURNAMENT
TUESDAY, 7 P.M.
\$20 per 2-person team
CASH ONLY PRIZES!

BREWERY TOUR AVAILABLE AFTER LUNCH.

LAST BUS TO CONFERENCE CENTER
LEAVES AT 1:20 P.M.

SILENT AUCTION

MON. 10 A.M. - TUE. 6:45 P.M.

SHERATON WESTPORT CHALET HOTEL

2020 CONFERENCE

BRANSON, MO
SEPTEMBER 22—24

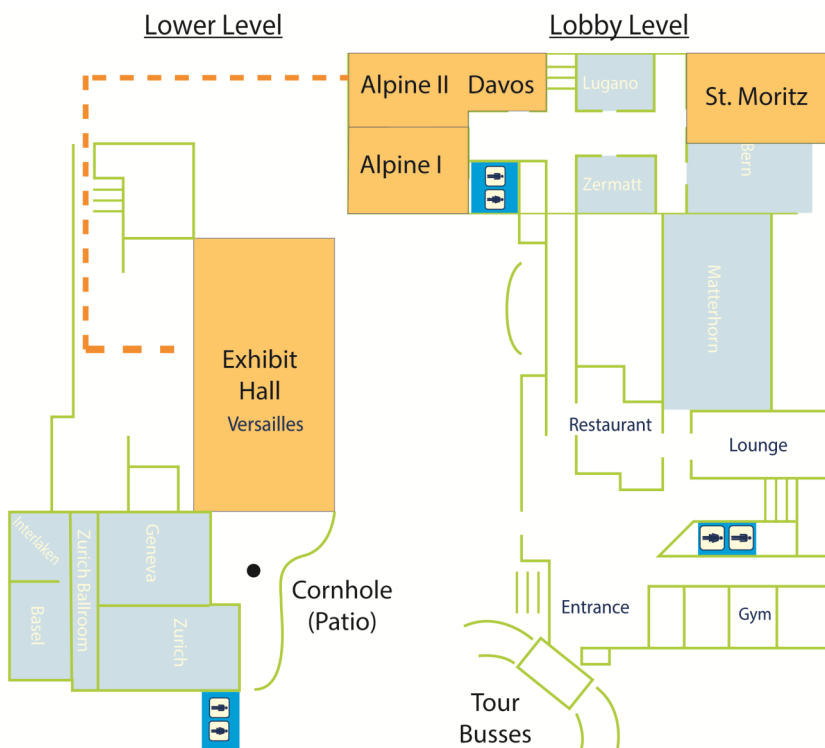


EXHIBIT HALL

Versailles Ballroom

SUNDAY

3 - 8:30 P.M. Exhibitor Setup

MONDAY

6 A.M. - 8:30 P.M. Exhibitor Setup
10 A.M. - 7 P.M. Exhibit Hall Open
5:15 - 7 P.M. Exhibitor Reception

TUESDAY

8:45 A.M. - 7 P.M. Exhibit Hall Open
4:15 - 5:30 P.M. Exhibitor Break
7:30 P.M. Tear Down

THANK YOU
SPONSORS AND VOLUNTEERS!

2019 CONFERENCE AT A GLANCE

SUNDAY, SEPTEMBER 22

12 NOON - 1 P.M.	Registration for Workshop	
1 - 5 P.M.	Pre-Conference Workshop: Changing Behaviors – Brooke Tully	ALPINE I
3 - 8 P.M.	Exhibitor Setup	

MONDAY, SEPTEMBER 23

7 A.M. - 5 P.M.	Registration	
6 - 8:30 A.M.	Exhibitor Setup	
7 - 8:30 A.M.	Breakfast	OUTSIDE EXHIBIT HALL
8 - 9:20 A.M.	Mini Workshop: Changing Behaviors - Brooke Tully	ALPINE I
9:20 - 9:30 A.M.	Break	
9:30 - 10:00 A.M.	Welcome and Opening Remarks - Dan Imig, MORA President; Conference Co-Chairs, Linda Adams and Elysia Musumeci	
10 - 10:45 A.M.	PLENARY: REDEFINING ROLES IN RECYCLING Beth Porter, Climate and Recycling Director at Green America and author of <u>Reduce, Reuse, Reimagine</u>	EXHIBIT HALL
10 A.M.	Silent Auction Begins	EXHIBIT HALL
10 A.M. - 7 P.M.	Exhibit Hall Open	
11:00 A.M. - 12 NOON	Concurrent Sessions	
	RETHINK: ONESTL-MANY COMMUNITIES. ONE FUTURE Aaron Young, East-West Gateway Council of Governments Jennifer Wendt, City of University City ALPINE II/DAVOS	REDUCE/REUSE: SALVAGED MATERIALS WITH A PURPOSE Jenny Murphy, Perennial Eric Schwarz, Refab ALPINE I
	RECYCLE RESPONSIBLY: ST. LOUIS INSTITUTIONS Matt Shelby, St. Louis Zoo Cassandra Hage, Washington University Rachel Greathouse, Saint Louis City Recycles ST. MORITZ	
12 NOON - 1:15 P.M.	LUNCHEON/KEYNOTE ADDRESS: Joe Abernathy, St. Louis Cardinals, Vice President, Facilities Planning and Engineering	EXHIBIT HALL
1:15 - 1:45 P.M.	Exhibit Hall Open	
1:45 - 2:45 P.M.	Concurrent Sessions	
	RETHINK: CONSTRUCTION AND DEMOLITION Laura Ginn, St. Louis Development Corp. Eric Schwarz, Refab Madeline Smith, Clayco Inc. Railesha Tuwari, Washington University ALPINE I	REDUCE: ZERO WASTE AND A DECADE OF BUSINESSES GOING GREEN Tom Wagner, Nestlé Purina PetCare Jean Ponzi, St. Louis Green Business Challenge ST. MORITZ
	RECYCLE RESPONSIBLY: CONTAMINATION EDUCATION STRATEGIES FROM ACROSS THE STATE Lisa McDaniel, MARC Laurie Duncan and Ashley Krug, City of Springfield Environmental Services Jennifer Wendt, OneSTL "Stick with the Six" ALPINE II/DAVOS	
2:45 - 3:15 P.M.	Exhibit Hall Open	
3:15 - 4:15 P.M.	Concurrent Sessions	
	RETHINK: BEYOND THE USUAL SUSPECTS-EXPANDING COMMUNITY PARTNERSHIPS Mickey Croyle, MO League of Women Voters Nicole Muschinske, Missouri Power and Light Lesli Moylan, Missouri Environmental Literacy Board ALPINE II/DAVOS	REUSE/REPAIR: REPAIR IS THE NEW "R" Bridget Sanderson, Missouri Right to Repair Lelande Rehard, Columbia Fix it Fair Rob Didriksen, MOREuse Application, Missouri OA-General Services ALPINE I
	RECYCLE RESPONSIBLY: EARTH DAY 365 GREEN DINING ALLIANCE RECYCLING ON THE GO EARTH DAY FESTIVAL Jen Myerscough, earthday365 Bob Henkel, earthday365 Victoria Donaldson, earthday365 ST. MORITZ	
4:15 - 4:25 P.M.	Break	
4:25 - 5:15 P.M.	MORA Annual Membership Meeting	EXHIBIT HALL
5:15 - 7 P.M.	Exhibitor Reception / Cash Bar	

2019 CONFERENCE AT A GLANCE

TUESDAY, SEPTEMBER 24			
7 A.M. – 5 P.M.	Registration		
8 – 8:30 A.M.	Breakfast		
8:30 – 9:15 A.M.	BREAKFAST PLENARY: MDNR UPDATE Chris Nagel, Waste Management Program Director		EXHIBIT HALL
8 – 9:15 A.M.	Exhibit Hall Open		
9:30 A.M.	Leave for Tours (<i>Board buses outside of front lobby</i>)		
	Republic Services - MRF	St. Louis Composting - C&D	EPC, Inc.- Electronic Recycling Strategic Materials-Glass Recycling
12 NOON – 1:20 P.M.	Lunch and a tour at Schlafly Tap Room Brewpub		
1:20 – 2:00 P.M.	Travel back		
2 – 3 P.M.	Concurrent Sessions		
	RETHINK: HARNESSING THE POWER OF COMPETITION IN K-12 EDUCATION Lesli Moylan, Green Ribbon School Program Hope Gribble, Green Schools Quest Margaret Lilly, Resourceful Schools Project ALPINE II/DAVOS	REDUCE: MINIMIZING TOXICITY IN THE WASTE STREAM Tim Warren, Lithium Batteries, Call2Recycle Sarah Staebell, St. Louis HHW John Holmes, EPA Safer Choice Program ALPINE I	RECYCLE RESPONSIBLY: CHEERS OR JEERS? A PANEL DISCUSSION ON GLASS Daniel VanKorn, Strategic Materials Lydia Gibson, Ripple Glass Brent Batliner, Republic Services ST. MORITZ
3 – 3:15 P.M.	Break		
3:15 – 4:15 P.M.	PLENARY: BRIEF BUT SPECTACULAR INNOVATION SHOWCASE-TELL US YOUR STORY IN 10 MINUTES OR LESS! So Fresh So Clean in Dutchtown South, Amanda Colon-Smith, Dutchtown South Community Corp. Dish to Dirt Home Composting, Ashley Krug, City of Springfield St. Louis County Curbside Organic Pilot, Ian Ashcraft, St. Louis County DPH Waste Management Program Jefferson County Recycling, Eric Larson, Jefferson County Higher Education Consortium, Maggie McCoy, EarthWays Center Parkway Schools Sustainability, Erik Lueders, Parkway School District		EXHIBIT HALL
4:15 – 5:30 P.M.	Exhibitor Break		
5:30 – 6:30 P.M.	MORA Annual Awards Reception		EXHIBIT HALL
6:45 P.M.	SILENT AUCTION ENDS		
7 P.M.	CORNHOLE TOURNAMENT / CASH BAR	<i>SIGN-UP AT REGISTRATION DESK</i>	PATIO OUTSIDE EXHIBIT HALL

WEDNESDAY, SEPTEMBER 25			
7:30 – 8:30 A.M.	Breakfast		
8 – 11:00 A.M.	Registration – Silent Auction Final Collection		
8:15 – 9:15 A.M.	PLENARY: REBUILDING RECYCLING TOWARDS ZERO WASTE THROUGH MEASURING WHAT MATTERS: PEOPLE AND THE PLANET		EXHIBIT HALL Kate Davenport, Co-President, Eureka Recycling
9:15 – 9:30 A.M.	Break		
9:30 – 10:30 A.M.	PLENARY: ORGANICS MANAGEMENT PANEL		EXHIBIT HALL Patrick Geraty, Total Organics Recycling Rana Bains, Bluebird Composting Kevin Anderson, Missouri Organics
10:30 – 10:40 A.M.	Hotel Check Out		
10:40 – 11:40 A.M.	PLENARY: COMMODITIES PANEL		EXHIBIT HALL Regional Broker: David Robnak, Central Paper Stock Fiber: Jeff Snyder, Pratt Recycling Inc. Regional Broker and Plastics: David Robnak, Central Paper Stock Glass: Daniel VanKorn, Strategic Materials Metals: TBD
11:40 – 11:50 A.M.	MORA Closing Announcements (MORA Board Meeting afterwards)		EXHIBIT HALL

Promoting a culture to sustain a healthy environment

Partner with business and communities

Protect public health & the environment

Ensure proper waste management



Saint Louis
COUNTY
PUBLIC HEALTH



there. do that.

recyclespot.org

Greater Kansas City's one-stop spot for recycling information



Ozark Rivers Solid Waste Management District

#4 Industrial Drive St. James, MO 65559

Serving the counties of Crawford, Dent, Maries, Gasconade, Phelps, Pulaski and Washington

Contact: Tammy Snodgrass

573-265-2993 tsnodgrass@meramecregion.org

Follow us at ozarkrivers.org or www.facebook.com/ORSWMD



Region M

Waste Management District



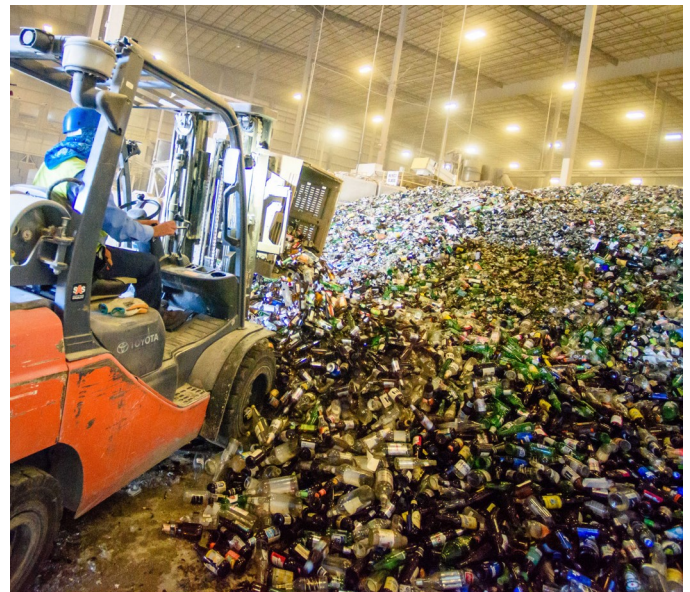
Like us on Facebook

Serving the counties of

- Barton
- Jasper
- McDonald
- Newton
- Vernon

in Southwest Missouri.

poverman@hstcc.org



WE RECYCLE GLASS.

BROKEN, MIXED COLOR, OTHER SOLUTIONS

CONTACT US
INFO@STRATEGICMATERIALS.COM
STRATEGICMATERIALS.COM



REUSE
REDUCE
RECYCLE

Quad Lakes

Solid Waste Management District

Republic Services® welcomes you
to the 2019 MORA Conference

Recycling. Simple as 1-2-3.



1 Know what to throw

Cardboard, paper, metal cans,
glass, plastic bottles and jugs.



2 Empty. Clean. Dry.™

Keep all recyclables free of food
and liquid.



3 Don't bag it

Never put recyclables in bags
or containers.

Visit RecyclingSimplified.com to learn more.

Recycling *Simplified*



©2019 Republic Services, Inc.

We'll handle it from here.®



DEI
Consulting

Daniel E. Imig
Consultant

1418 Neffwold Lane
Kirkwood, MO 63122

314-378-1548
deimig@sbcglogal.net



**Serving The Solid Waste
Industry for over 49 Years!**

The Municipal Equipment Specialists

Five Locations to Serve You!

Visit us locally at 14001 Botts Road, Grandview, MO 64030

View over 100 trucks in stock on our website at
elliottequipco.com or call 816-761-4840!

We'd like to help you grow!



Missouri manufacturers have received more than \$11 million from EIERA's Market Development Program, which focuses on end markets for recovered materials. If you make recycled products in Missouri, you may be eligible. Call EIERA at 573-526-5555 to learn more.

EIERA

Environmental Improvement and Energy Resources Authority

www.eiera.mo.gov



Ozarks Headwaters
Recycling & Materials Management District

SERVING
Greene, Christian, Dallas, Polk,
and Webster Counties

Recycle417.com

2019 CONFERENCE SPONSORS & EXHIBITORS

Bedhead Mattress Recycling

P.O. Box 1781
Nixa, MO 65714
417.209.9954
JL Phillips
jlphillips@bedheadmattressrecycling.com
www.bedheadmattressrecycling.com

Bluebird Composting

4657 State HWY HH
Fulton, MO 65251
573.999.4082
Rana Bains
Info@bluebirdcomposting.com
www.bluebirdcomposting.com

Busch Systems, Inc.

(other sponsor – bins)
Barrie Ontario, Canada
705.722.0806.
Mandy Bortolussi
mandyb@buschsystems.com
www.buschsystems.com

Champlin Tire Recycling, Inc.

301 Cedar St.
Concordia, KS 66901
417.725.5328
Mark Haist
mdhaist@hotmail.com
www.champlintirerecycling.com

City of Columbia

PO Box 6015
Columbia, MO 65205
573.874.6254
Ben Kreitner
ben.kreitner@como.gov
www.como.gov

Composting & Organics Association of Missouri (COAM)

39 Old Elam Avenue
Valley Park, MO 63088
636.861.3344
Patrick Geraty
patrick@stlcompost.com
www.coam-mo.com

Computer Recycling Center

528 N Prince Lane
Springfield, MO 65802
417.866.2588
Luke Westerman
Luke@ComputerRecyclingCenter.com
www.ComputerRecyclingCenter.com

Covanta Environmental Solutions

445 South Street
Morristown, NJ 07960
862-345-5000 ext 5357
Rosa Giordano
rogiordano@covanta.com
www.covantaes.com

Cram-a-Lot

PO Box 229
Springdale, AR 72765
479.751.7320
Brian Schreiber
brian@jv.com
www.cram-a-lot.com

DeHart Recycling Equipment

11862 Missouri Bottom Rd.
Hazelwood, MO 63042
314.292.8181
John Greider Jr.
JohnG@DeHartBaler.com
www.dehartbaler.com

DEI Consulting

1418 Neffwold
Kirkwood, MO 63122
314.378.1548
Dan Imig
deimig@sbcglobal.net

EIERA Market Development Program

P.O. Box 744
Jefferson City, MO 65102
573.751.4919
Kristin Tipton
kristin.allantipton@eiera.mo.gov
www.eiera.mo.gov

Elliott Equipment Company

14001 Botts Road
Grandview, MO 64030
816.761.4840 ext. 2401
Kevin Hilgendorf
kevinh@elliottequipco.com
www.elliottequipco.com

EPC, Inc.

100 S. Stringtown Road
Wright City, MO 63390
636.443.1999
David Beal
dave.beal@epcusa.com
www.epcusa.com

2019 CONFERENCE SPONSORS & EXHIBITORS



Fick Supply Service Inc.

501 N. Eatherton Rd
Wildwood, MO 63005
636.532.4978
Candice Zweifel
Candice@ficksupply.com
www.ficksupply.com

Food too Good to Waste (MORA)

Foam Equipment & Consulting Co.

10725 Indian Head Industrial Blvd.
St. Louis, MO 63132
314.427.4395
Chad Plotts
cplotts@foamequipment.com
www.foamequipment.com

Good Earth Tools

Matt Olinger
Good Earth Tools
150 Industrial Drive
Festus, MO 63028
mattolinger@goodearthtools.com
www.goodearthtools.com

Gregory Container Company

1385 Industrial Dr
Kahoka, MO 63445
660.727.1350
Sonya Dunn
sdunn@gregorydm.com
www.gregorycontainer.com

LEDR Recycling (C&D)

(Other Sponsor – Name Tags/Lanyards)
600 MB Corporate Park Court
St. Charles, MO 63301
John Davis
john@ledrrecycling.com
www.ledrrecycling.com

MARC Solid Waste Management Council

600 Broadway, Suite 200
Kansas City, MO 64105
816.474.4240
Lisa McDaniel
lmcdaniel@marc.org
www.marc.org

MARCK Industries, Inc.

PO Box 912
Cassville, MO 65625
417-846-5778
Stephanie Annecharico
sannecharico@marck.net
www.marck.net

McCarthy Construction

(Other Sponsor—Schlafly Lunch)
1341 N Rock Hill Rd
St. Louis, MO 63124
314.968.3300
Dan Smith
DJSmith@mcCarthy.com
www.mccarthy.com

MDNR - Waste Management Program

P.O. Box 176
Jefferson City, MO 65102
573.751.5401
Chris Nagel
chris.nagel@dnr.mo.gov
www.dnr.mo.gov

Millstone Weber

(Other Sponsor—Schlafly Lunch)
601 Fountain Lakes Blvd.
St. Charles, MO 63301
636.949.0038
bids@millstoneweber.com
www.millstoneweber.com

Missouri Recycling Association

PO Box 2144
Jefferson City, MO 65201
866-667-2777
angie@MORA.org
www.MORA.org

MRC Midwest Recycling Center

3751 Old State Road M
Imperial, MO 63052
636.223.0150
Greg Cooksey
greg@midwrc.net
www.mrcrecycling.net

Ozarks Headwaters Recycling District

940 N Boonville Ave, Room 303B
Springfield, MO 65802
417.868.4197
Angie Snyder
asnnyder@greencountymo.gov
www.recycle417.com

Ozark Rivers SWMD

4 Industrial Drive
St. James, MO 65559
573.265.2993
Tamara Snodgrass
tsnodgrass@meramecregion.org
www.ozarkrivers.org

 2019 CONFERENCE SPONSORS & EXHIBITORS

Pedro's Planet

(Other – Special Sponsor – Printing)
290 Axminster Drive
Fenton MO 63026
314.423.3898
Marty Miller
memiller@sci-supplies.com
www.pedrosplanet.com

Perennial

Katie Carpenter
Perennial
executive director
p. 314-832-2288
katie@perennialstl.org
www.perennialstl.org



Power Equipment Company

1001 Forest Ave
Kansas City, MO 64157
816.730.4864
Lance Green
lgreen@power-equip.com
www.power-equip.com

Quad-Lakes SWMD

221 N. Second St.
Clinton, MO 64735
660.885.3393
Michelle Slater
m Slater@kaysinger.com
www.kaysinger.com

Region M SWMD

800 E Pennell
Carl Junction, MO 64834
417.649.6400
Patty Overman
poverman@hstcc.org
www.hstcc.org

Republic Services

12976 St. Charles Rock Road
Bridgeton, MO 63044
314.744.8176
Joell Aguirre
jaguirre@republicservices.com
www.republicservices.com

Revolution Systems

7484 Norfolk Pl, Ste B-2
Castle Pines, CO 80108
Patrick Tierney
720-772-6105
PTierney@RevolutionSystems.net
www.revolutionsystems.net



Ripple Glass

450 E. 4th St. / Suite 201
Kansas City, MO 64106
816.221.4527
Lydia Gibson
lydia@rippleglass.com
www.rippleglass.com

Roland Machinery Co.

(Other Sponsor—Schlafly Lunch)
4670 Crossroads Industrial Dr,
Bridgeton, MO 63044
Phone: (314) 291-1330
www.rolandmachinery.com

St. Louis-Jefferson SWMD

7525 Sussex Ave.
St. Louis, MO 63143
314.645.6753
Dave Berger
david@swmd.net
www.swmd.net

**Saint Louis County Department of Public Health
Solid Waste Management Program**

6121 N. Hanley Rd.
Berkeley, MO 63105
314.615.8958
Margaret Lilly
Miilly@stlouisco.com
www.recyclesaintlouis.com

Strategic Materials

17220 Katy Freeway/Suite 150
Houston, TX 77094
281.755.7132
Dan VanKorn
dvankorn@strategicmaterials.com
www.strategicmaterials.com

U.S. EPA Region 7

11201 Renner Boulevard
Lenexa, KS 66219
913-551-7439
Gayle Hubert
hubert.gayle@epa.gov
www.epa.gov

VOTE FOR BOARD MEMBERS
BY TUESDAY, 3:15 P.M.

PLEASE COMPLETE THE
SURVEYS FOR THE CONFERENCE
WORKSHOPS AND SESSIONS.

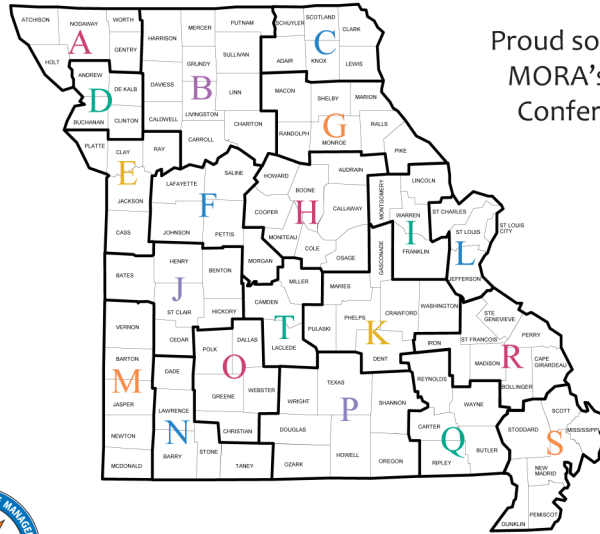


**CORNHOLE
TOURNAMENT
TUESDAY, 7 P.M.
\$20 per 2-person team
CASH ONLY
PRIZES!**



St. Louis-Jefferson Solid Waste Management District - Region L

City of St. Louis, St. Louis County, Jefferson County, and St. Charles County



Proud sponsor of
MORA's 2018
Conference



Funding provided by St. Louis-Jefferson Solid Waste Management District and the Missouri Department of Natural Resources.



epc
Secure IT Asset Recovery
resell - recycle - relax

St. Charles Wright City Kansas City

Recycling Event Consulting
Secure Data Destruction
Certified Responsible Recycling

636.443.1999
epcusa.com

Your Certified Electronic's Recycling Partner



RECYCLE RESPONSIBLY

www.RecycleResponsibly.org

Learn more about the St. Louis metro area's first region-wide recycling education campaign.

Candice Zweifel
Sales and Product Support Specialist www.ficksupply.com



**Bulk Landscape Products
Wood Recycling . Custom Grinding**

Office (636) 532-4978
Cell (314) 560-8085
Email: Candice@ficksupply.com

501 N. Eatherton Rd.
Wildwood, MO 63005



PLATINUM

ST. LOUIS-JEFFERSON SWMD



SILVER

EIERA

EPC USA

MISSOURI DEPT. OF NATURAL RESOURCES

OZARKS HEADWATERS RECYCLING

REPUBLIC SERVICES

ST. LOUIS COUNTY DEPT. OF PUBLIC HEALTH

STRATEGIC MATERIALS

MISSOURI



NATURAL RESOURCES



EIERA

Environmental Improvement and Energy Resources Authority



BRONZE

CITY OF COLUMBIA

DEI CONSULTING

ELLIOTT EQUIPMENT CO.

FICK SUPPLY SERVICES, INC.

MILLSTONE WEBER

MID-AMERICA REGIONAL COUNCIL SWMD

OZARK RIVERS SWMD

QUAD LAKES SWMD

REGION M SWMD



SPECIAL THANKS

BUSCH SYSTEMS

LEDR

PEDRO'S PLANET

ROLAND MACHINERY CO.

MCCARTHY CONSTRUCTION

